

PNEUMATIC PLATFORMS

Air **Stroke**



CAPABILITIES & SAFETY

G-LIFT

OFFER IS ADDRESSED TO

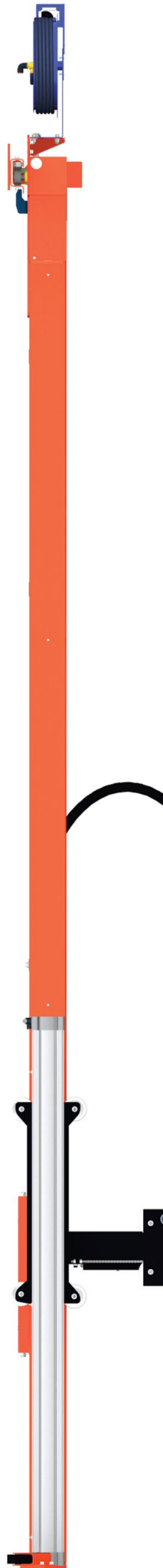
Companies where easy access to the items on the high altitude is required such as

- paintshops
- shot-blasting machines
- automotive industry company
- automotive industry company
- bulky equipment or vehicles service

Advantages of G-Lift AirStroke

- high quality
- safety of use
- vertical stroke up to 6 meters
- capacity up to 200 kg for one person platform AirStroke
- capacity up to 300 kg for two persons platform AirStrokeDuo
- telescopic extension slide powered by only one actuator
- reliability
- ease of maintenance (self-cleaning rails on which the device moves)

**WORK
FREELY**



ONE-PERSON PLATFORM LOAD CAPACITY OF 200KG

PLATFORM AIRSTROKE

The components used in the production of G-Lift platforms come from the world's leading manufacturers.

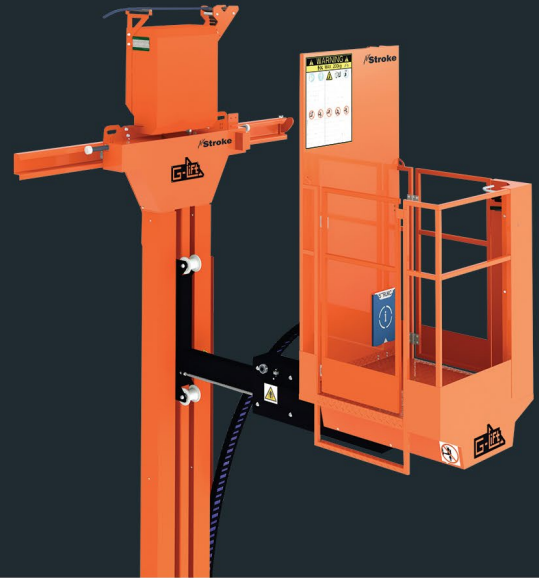
is a fully pneumatic device which allows an operator to move freely in three axes.

This functionality allows for a significant increase in productivity during operations, such as repair service, surface preparation and painting.

The platform becomes invaluable when working on large-size components, equipment or means of transport such as buses, trains, etc.

AirStroke platforms are mounted on the wall what helps to keep the floor clean and gives free access to the floor surfaces.

Pneumatic control is a simple and reliable solution allowing safe use of platforms in hazardous areas (ATEX Zone 2 Cat. 3G).



TECHNICAL specification and parameters

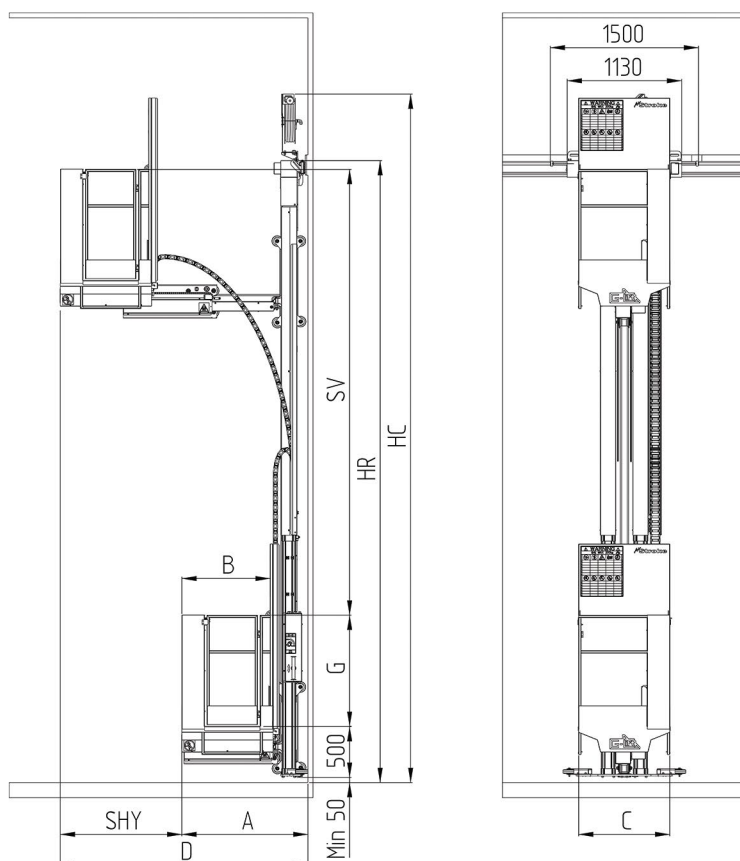
MOUNTING		on the wall without contact with the floor
RANGE OF MOVEMENT	LIFTING	up to 6000 mm
	ALONG THE WALL	up to 30 m, max. depending on the compressed air supply system
TELESCOPIC EXTENSION		400÷1600 mm
WORKSPACE		<ul style="list-style-type: none">• up to 8,5 meters from the floor• up to 4 meters from the wall
COLOR		RAL 2004 / RAL 9005
LOAD CAPACITY		200 kg (operator + equipment)
TRAVELLING SPEED	LIFTING	6 m/min
	ALONG THE WALL	30 m/min
	TELESCOPIC EXTENSION	6 m/min
CONTROL	INSIDE THE CAGE	up/down; right/left; in/out
	AT GROUND LEVEL	up/down; in/out (option)
POWER SUPPLY	COMPRESSED AIR	6÷8 bar ISO 8573-1:2010
	WEAR	350 l/min
	CONNECTION	2000 l/min (for platform and tools)
BREAK		<ul style="list-style-type: none">• in upper rail• optionally additional break on lower support wheels

MODEL RANGE

The innovative design of Airstroke platforms enables the increase of the range of its movements compared to existing solutions available on the market, which allows for a significant increase of the workspace.

With Airstroke platforms we gain easy access to the upper surfaces of large objects such as rail cars or aircraft components.

Dimension	MINI Model	MIDI Model	MAXI Model	MAXI XXL Model
A	930	1080	1230	1450
B	600	750	900	1100
C	900			
SV	2000 mm to 6000 mm with increments of 100 mm			
D	1500	1950	2400	3050
SHY	700	1000	1300	1600
HR	SV + 1700			
HC	SV + 2400			
G	The height of cage railings from the cage floor = 1100 mm			



TWO-PERSON PLATFORM LOAD
CAPACITY OF 300KG

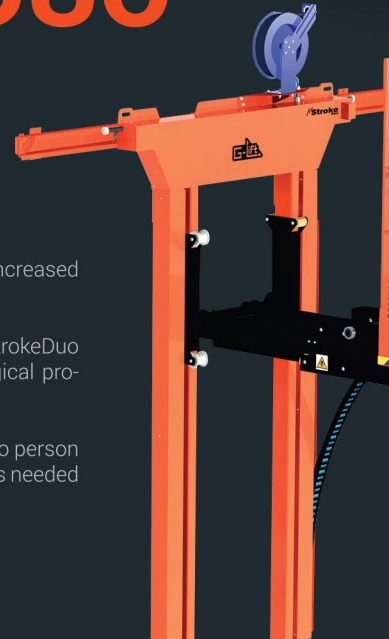
PLATFORM AIRSTROKE DUO

Pneumatic Airstroke Duo platform is the development of one person platform design and has all its functions.

Due to its innovative design Airstroke Duo platform provides increased workspace and safe operation simultaneously for two people.

The dimensions of the cage allow you to customize the AirStrokeDuo platform to work with the most advanced and complex technological processes, as well as provides easy operation for the users.

The large capacity of the cage increases productivity by allowing two person operation. It also allows to transport additional tools and accessories needed for operation.



Additional advantages of double platform are

- big cage with the dimensions of 2200x1100 mm
- load capacity up to 300 kg
- telescopic extension up to 2 meters, which is not common among competitive devices of this type. This feature distinguishes AirStrokeDuo on the market.

TECHNICAL

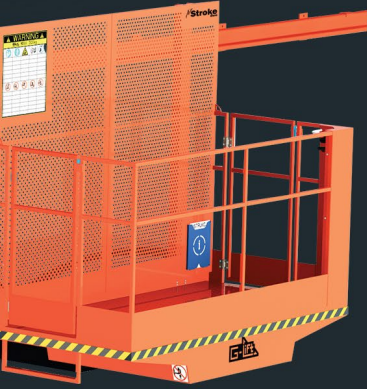
specification and parameters

MOUNTING		on the wall without contact with the floor
RANGE OF MOVEMENT	LIFTING	up to 6000 mm
	ALONG THE WALL	up to 30 m, max. depending on the compressed air supply system
TELESCOPIC EXTENSION		400÷2000 mm
WORKSPACE		• up to 8,5 meters from the floor • up to 4,5 meters from the wall
COLOR		RAL 2004 / RAL 9005
LOAD CAPACITY		300 kg (2 operators + equipment)
TRAVELLING SPEED	LIFTING	6 m/min
	ALONG THE WALL	30 m/min
	TELESCOPIC EXTENSION	6 m/min
CONTROL	INSIDE THE CAGE	up/down; right/left; in/out
	AT GROUND LEVEL	up/down; in/out (option)
POWER SUPPLY	COMPRESSED AIR	6÷8 bar ISO 8573-1:2010
	WEAR	500 l/min
	CONNECTION	2000 l/min (for platform and tools)
BREAK		• in upper rail • optionally additional break on lower support wheels

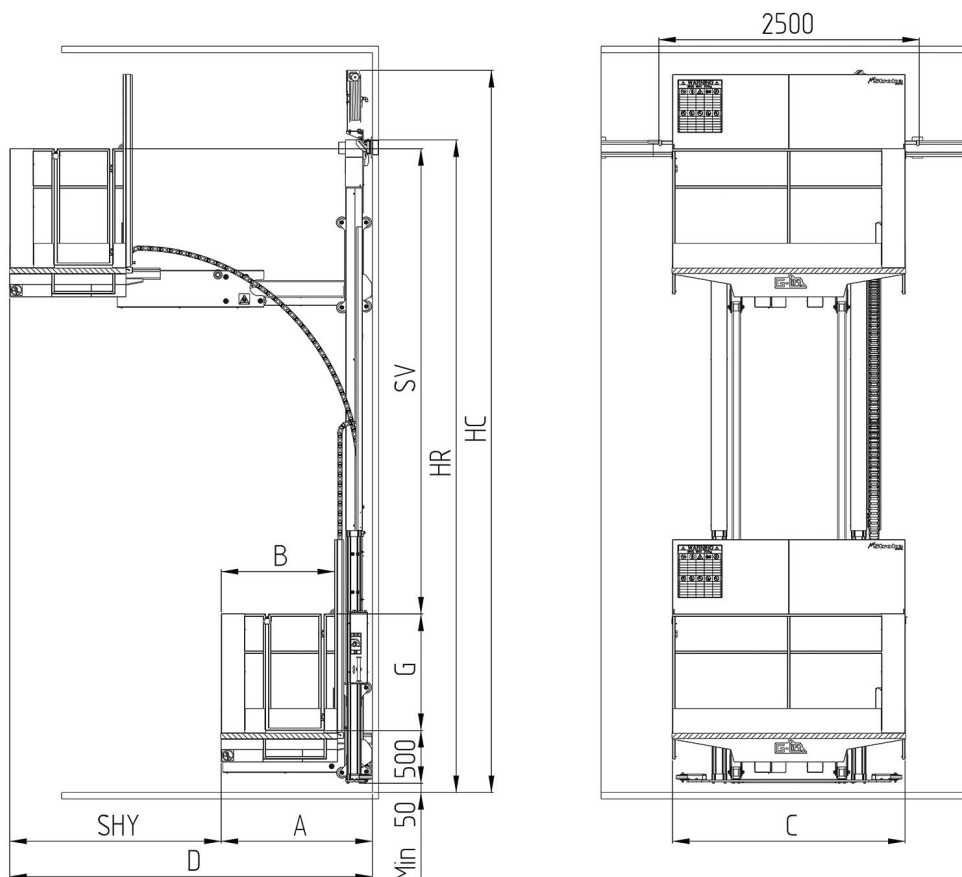
MODEL RANGE

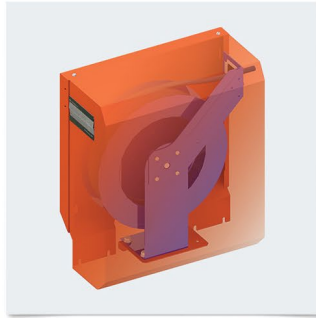
The innovative design of AirstrokeDuo platforms enables the increase of the range of its movements. Due to its unique design solutions, the AirStrokeDuo platform is equipped with a 2 meter telescopic extension, which allows for a significant increase of the workspace.

With AirstrokeDuo platforms we gain easy access to the upper surfaces of large objects such as rail cars or aircraft components.



Dimension	DUO MAXI Model	DUO MAXI XXL Model
A	1230	1430
B	900	1100
C	2200	
SV	2000 mm to 6000 mm with increments of 100 mm	
D	2830	3430
SHY	1600	2000
HR	SV + 1700	
HC	SV + 2400	
G	The height of cage railings from the cage floor = 1100 mm	





AIR SUPPLY SYSTEMS

AirStroke pneumatic platforms are powered by automatic hose reel located in the upper part of the mast or festoon cable system.

Hose reel: This solution works well for movement of the platform along the track in a range of 20 meters (Basic-01). The application of center mounted air supply connection and hose reel operating on two sides allows to extend the range of operation up to 40 meters (Basic Plus).

Festoon cable system: This solution enables the range of movement of the platform above 40 meters. In this option powered by festoon cable system additional media can be supplied: paint • electricity • hot and cold water.



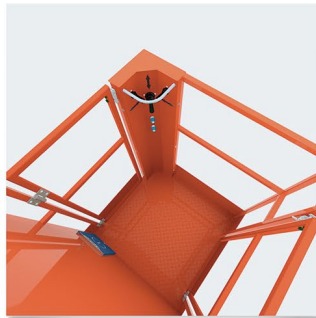
EQUIPMENT

AirStroke offers a lot of elements in standard which can be expected from pneumatic platform.

The basic configuration includes: cage with dimensions 900x900mm • 2 air supply connections for additional application on the control panel in the cage • additional up/down control from floor level • 20 meters hose reel in basic option • cage overload detection system with alarm signal • chain slack protection system.

The standard equipment of AirStroke platforms can be extended with additional components such as: air preparation units in cage for additional equipment • additional air connections • external cage for paint or other equipment • break on lower support wheels • telescopic extension in position confirmation signal*

*only when powered by cable festoon system.



ERGONOMICS

Gained experience and smart design made it possible to create safe and easy to use Air Stroke platforms:

- **robust and easy-to-use** control panel allows the control of the platform, without the need of taking the eyes off from the work being done;
- **anti-slip** entrance steps and cage floor;
- **access to the cage** from both sides;
- **additional baseboard** preventing the objects falling out of the cage;
- **self-cleaning and reliable rail** - innovative profile (SCR-Self-Cleaning Rail).



OPTIONS

We offer ready packages for operation of the AirStroke platforms in specific conditions as well as the adjustment of the platforms and their equipment to the individual needs and requirements of the customers.

Shot-blasting machine package includes: rubber shield of the cage • shields of main cylinders body, lower part of the cage, hose reel • shields of mast and telescope rollers • brushes removing impurities from the inside of the rail • strengthened energy supply chains.

INDIVIDUAL PACKAGE the ability to design and execute a package tailored to any client's needs.

LOW PRESSURE VERSION Single Airstroke platform is also available in low pressure version. This device reaches full load capacity of 200kg at a pressure of only 4 bar. Reducing pressure allows to use it everywhere where low pressure systems are used. Another advantage is the reduction of energy demand of the platform.

ABOUT US

INNOVATIVE SOLUTIONS

FOR COMFORT AND SAFETY

G-Lift AirStroke platforms have been created basing on the knowledge and many years of experience of the team of engineers, who design machines for handling, with special emphasis on the paint industry.

Professionalism, knowledge of the industry and market needs resulted in the creation of a series of working platforms, meeting the expectations of even the most demanding customers.

Advanced design and calculation software, modern production techniques and the implementation of a system of control and production management ERP enabled the formation of a product with optimal characteristics and high utility values.



Optimizing each stage of product development allows for the introduction of advanced and competitively priced devices to the market. G-Lift Airstroke are single and double platforms with packages of specialized equipment used in e.g.: shot-blasting machines or premises where there are adverse conditions such as high temperature.

Our products are **single** and **double** platforms with packages of specialized equipment.

The platforms are used in e.g.: shot-blasting machines or premises where there are adverse conditions such as high temperature.